

## Introduction to Bioinformatics

### 9th Lab

2016.11.15.

### Connecting to Google cloud server from Windows

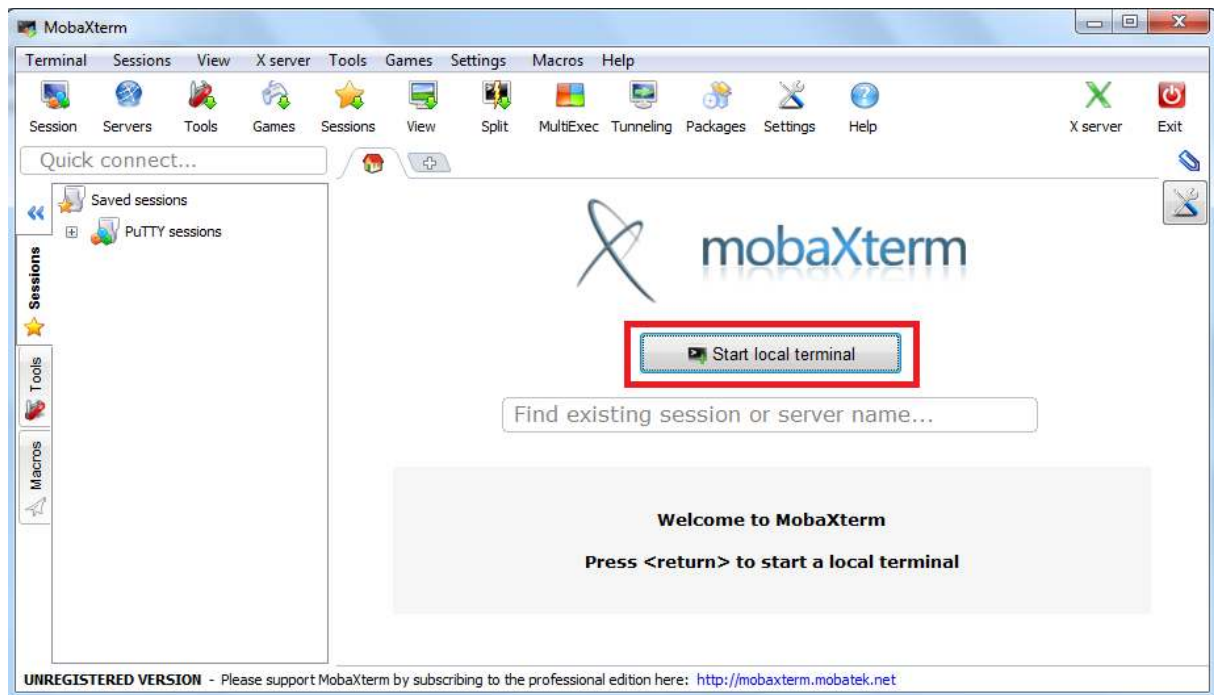
1. Download the **MobaXterm** program: (you can use the portable edition)

<http://mobaxterm.mobatek.net/download-home-edition.html>

2. Extract the .zip and start **MobaXterm\_Personal\_9.4**:

CygUtils.plugin	2016.10.22. 0:47	PLUGIN fájl	14 773 KB
MobaXterm_Personal_9.4	2016.10.25. 22:18	Alkalmazás	11 542 KB
MobaXterm_Personal_Customizer_9.4	2016.10.25. 22:21	Alkalmazás	2 126 KB
MobaXterm_v9.4	2016.11.14. 15:30	WinRAR ZIP archive	28 130 KB

3. Start a **local terminal**:

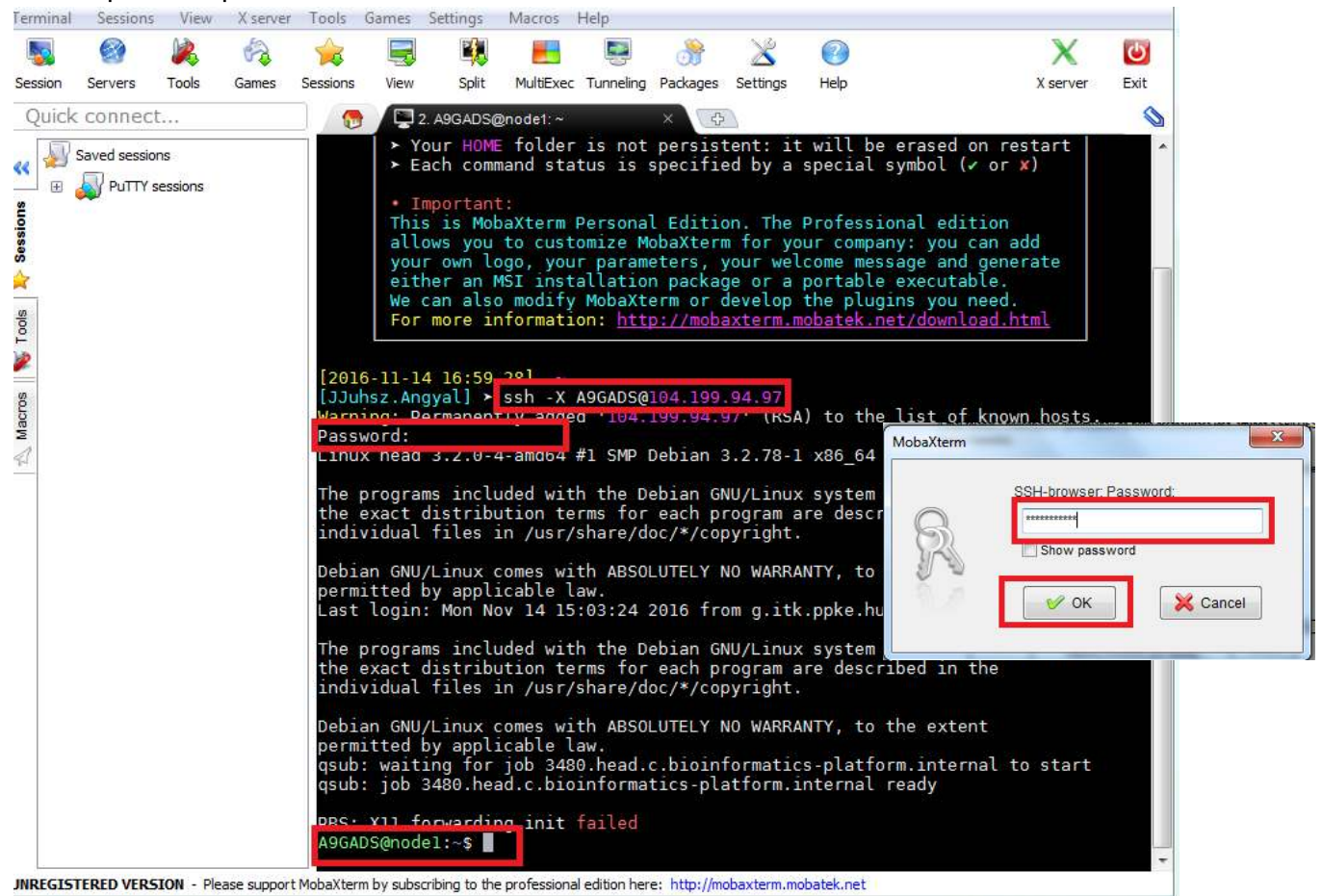


4. ssh to the head of our cloud server:

**ssh -X NEPTUNCODE@23.251.140.195**, where NEPTUNCODE is your neptun code with capital letters and 23.251.140.195 is the IP address of our cloud server

The password is: **Bioinfo2016**

Then repeat this password if it is needed.



After these the head puts you to one of the nodes, and you can see

**NEPTUNCODE@nodeX**, where X is the number of your node, you will work here, and use the resources of this node.

6. Follow the instructions of the Practice Tutorial.

### Make access to your work

7. Create a dictionary named public\_html: **mkdir public\_html**

8. If you **copy your files and dictionaries into this dictionary**, they will be visible and available for download from the internet through the **23.251.140.195/~NEPTUNCODE/** address.

Compute Engine - Bioinf x MobaXterm Xserver with x Index of /~A9GADS x

← → ↻ ⓘ 104.199.94.97/~A9GADS/

## Index of /~A9GADS

<a href="#">Name</a>	<a href="#">Last modified</a>	<a href="#">Size</a>	<a href="#">Description</a>
<hr/>			
 <a href="#">Parent Directory</a>		-	
 <a href="#">mytxt.txt</a>	14-Nov-2016 15:50	7	

*Apache/2.2.22 (Debian) Server at 104.199.94.97 Port 80*