

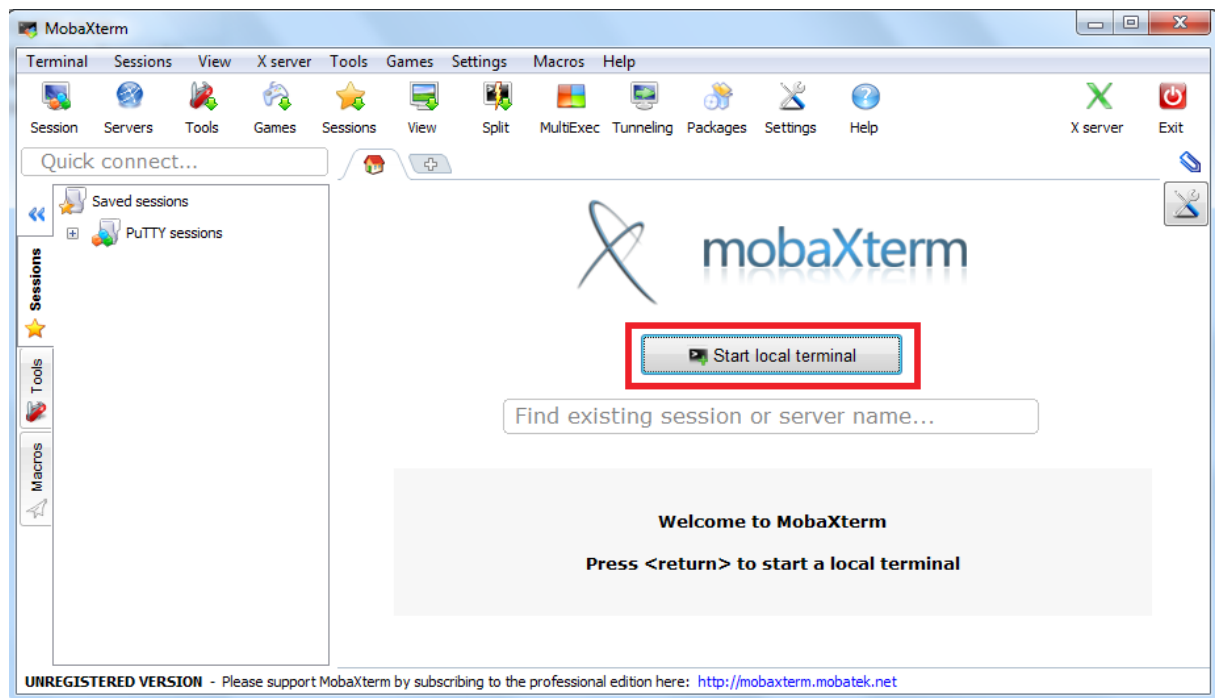
Introduction to Bioinformatics
10th Lab
2016.11.22.

Connecting to Google cloud server from Windows

1. Download the **MobaXterm** program: (you can use the portable edition)
<http://mobaxterm.mobatek.net/download-home-edition.html>
2. Extract the .zip and start **MobaXterm_Personal_9.4**:

CygUtils.plugin	2016.10.22. 0:47	PLUGIN fájl	14 773 KB
MobaXterm_Personal_9.4	2016.10.25. 22:18	Alkalmazás	11 542 KB
MobaXterm_Personal_Customizer_9.4	2016.10.25. 22:21	Alkalmazás	2 126 KB
MobaXterm_v9.4	2016.11.14. 15:30	WinRAR ZIP archive	28 130 KB

3. Start a **local terminal**:



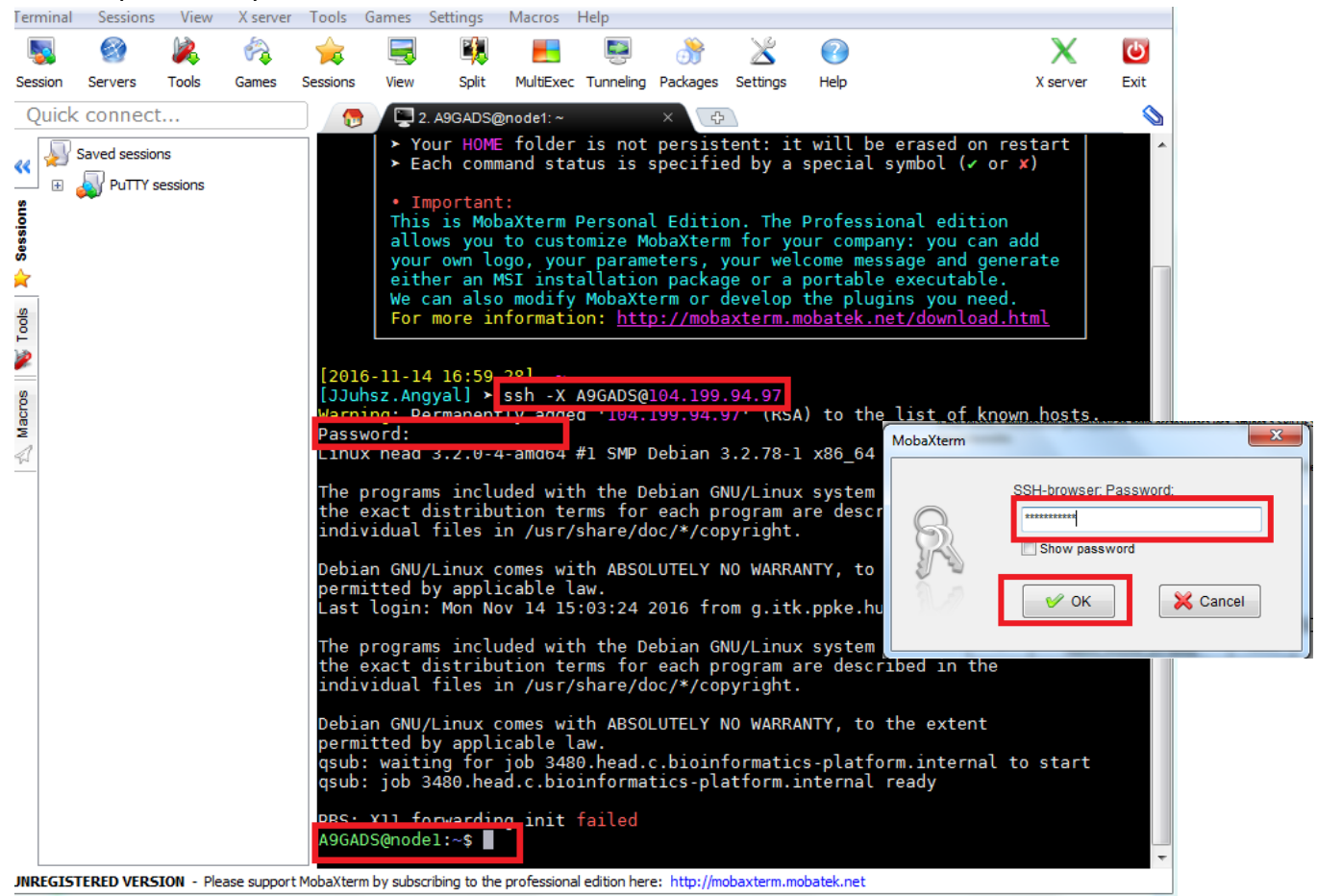
4. ssh to the head of our cloud server:

ssh -X NEPTUNCODE@104.199.95.72

where NEPTUNCODE is your neptun code with capital letters and 23.251.140.195 is the IP address of our cloud server

The password is: **Bioinfo2016**

Then repeat this password if it is needed.



After these the head puts you to one of the nodes, and you can see **NEPTUNCODE@nodeX**, where X is the number of your node, you will work here, and use the resources of this node.

6. Follow the instructions of the Practice Tutorial.

Make access to your work



7. Create a dictionary named public_html: **mkdir public_html**

8. If you **copy your files and dictionaries into this dictionary**, they will be visible and available for download from the internet through the **23.251.140.195/~NEPTUNCODE/** adress.

Compute Engine - Bioinf x MobaXterm Xserver with x Index of /~A9GADS x

104.199.94.97/~A9GADS/

Index of /~A9GADS

Name	Last modified	Size	Description
 Parent Directory		-	
 mytxt.txt	14-Nov-2016 15:50	7	

Apache/2.2.22 (Debian) Server at 104.199.94.97 Port 80